

INTERIOR MAGAZIN

High-end sculptural multi-layered veneer wall panels

DOLORES PARK WEST

LUXURIOUS *urban living*



SAN FRANCISCO-US

SHROUDED BEHIND A METICULOUSLY RESTORED VICTORIAN FAÇADE IS A HOME UNLIKE ANY OTHER. DOLORES PARK WEST IS THE EPITOME OF LUXURIOUS URBAN LIVING, FEATURING AN INCREDIBLE ARRAY OF ARCHITECTURAL DETAILS AND SUMPTUOUS DESIGNS, MOST NOTABLY OUR LARGEST AMAZONAS WALL YET, ACCOMPANYING YOUR ASCENT THROUGH THIS JEWEL BOX OF A HOME.



SECRET HATCH
in-between the panels

PRIVATE APARTMENT
BUDAPEST-HUNGARY

THIS PRIVATE APARTMENT, LOCATED IN THE OUTSKIRTS OF BUDAPEST SPORTS MANY HIGH-END DECORATIVE ELEMENTS, LIKE OUR CUSTOM **MONTANA** PANEL CORNER, WHICH THIS TIME ISN'T ONLY FOR SHOW. OUR **MONTANA** CORNER ALSO HOUSES AN ENTIRE ELECTRICAL ROOM, WHICH CAN BE ACCESSED BY OPENING A SECRET HATCH BUILT IN-BETWEEN THE PANELS. WE'RE VERY PROUD OF OUR WORK HERE, AS IT NOT ONLY PROVIDES A DISTINCTIVE VISUAL ELEMENT, BUT ALSO LETS THE HOUSE KEEP ITS MINIMALISTIC DESIGN BY ENCLOSING EVERY ELECTRICAL CABLE, SWITCH AND OTHER FUNCTIONAL PARTS, THAT WOULD OTHERWISE HURT THE APARTMENT'S AESTHETICS.



MNKY HSE

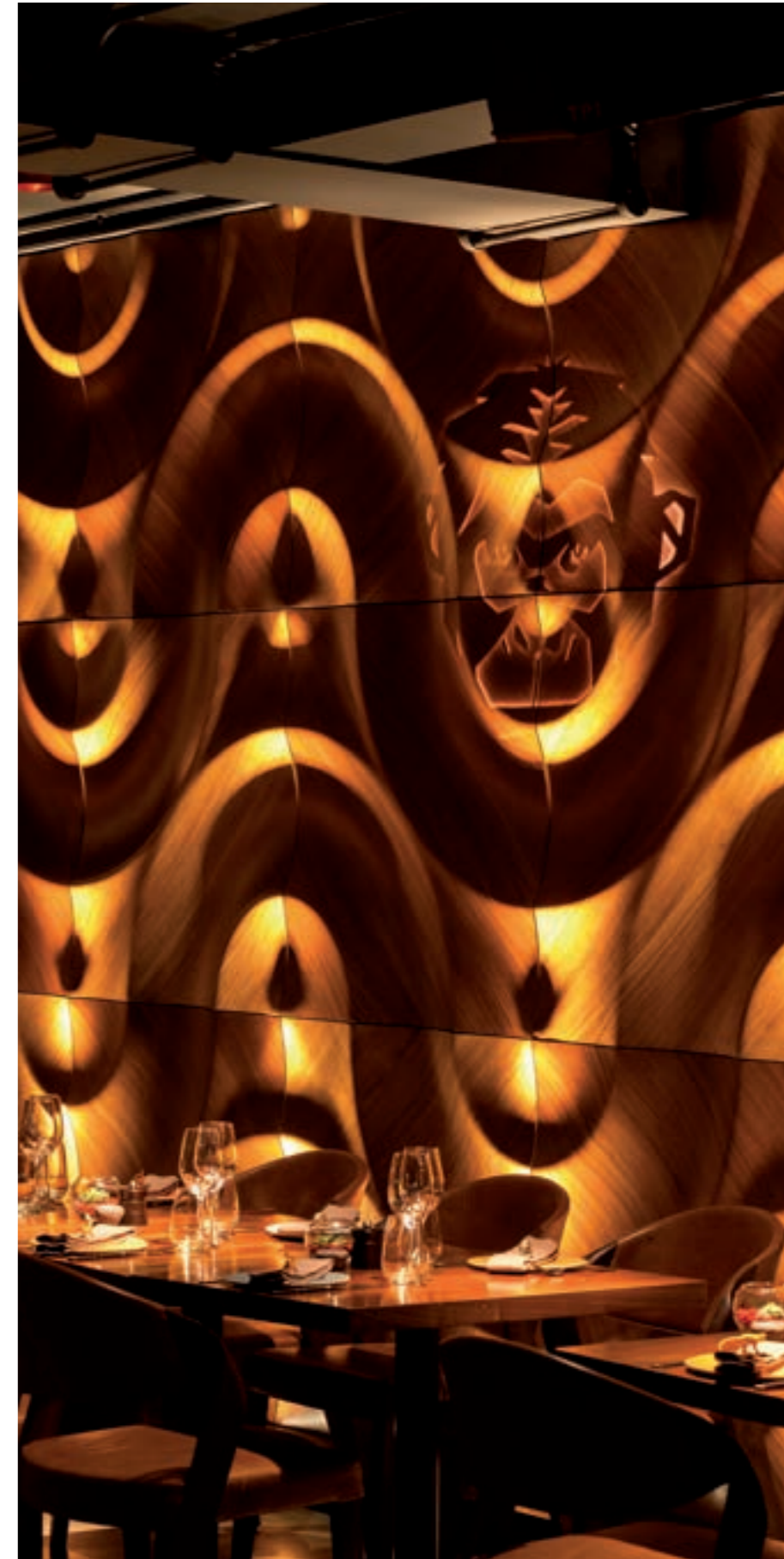


LAVISH AND STRIKINGLY
colourful style

LONDON-UK

DOHA-QATAR

A LEADER IN THE HOSPITALITY WORLD, MNKY HSE COMBINES THE VERY BEST OF LATIN AMERICAN CULINARY EXPERIENCES WITH ITS LAVISH AND STRIKINGLY COLOURFUL STYLE TO TRANSPORT GUESTS INTO A OTHER REALM, WHERE ONLY FINE CUISINE AND ENTERTAINMENT EXISTS. BOLSTERING THE EXPERIENCE, OUR **VOLGA** WALLS SERVE AS THE MAIN BACKGROUND FOR EACH NIGHTS' ENTERTAINMENT EVENT, AND WITH ITS UNIQUE MNKY LOGO, IS AN EVER-STARING PRESENCE FOR OLD AND NEW GUESTS ALIKE.



HAVEN
for anyone



DONAUTICA RESTAURANT & HOTEL
FADD-HUNGARY

THIS LUXURIOUS GETAWAY RESORT IS A TRUE MANIFESTATION OF SECLUSION AND SERENITY. A HAVEN FOR ANYONE, IN SEARCH OF REST AND RELAXATION. WHETHER YOU'RE OUTDOORS ON THE PRIVATE BEACH, OR INDOORS MESMERIZED BY THE MASSIVE SWIRLS OF OUR **BONDI** WALL, YOU NEVER HAVE TO STEP AWAY FROM THESE CALMING WAVES.





THE OWNER'S
artistic passions

ACTIVE ENTERTAINMENT ROOM BUDAPEST-HUNGARY

THIS ASTONISHING PRIVATE RESIDENCE IS BOTH A LUXURIOUS HOME AND ALSO A TRIBUTE TO THE OWNER'S ARTISTIC PASSIONS. THE ENTERTAINMENT ROOM, WHICH IS DISTINGUISHED BY AN ABUNDANCE OF SHAMAL WALLS, OFFERS GUESTS A NUMBER OF ACTIVITIES, LIKE HOME THEATRE VIEWING OR A SPACIOUS GAME OF TABLE TENNIS. A SECRET HATCH IN THE PANEL-FILLED WALL OPENS UP TO REVEAL A VINTAGE VINYL RECORD PLAYER. WITH MULTIPLE HOME AUTOMATION SOLUTIONS IMPLEMENTED, THIS RESIDENCE IS NOT ONLY TASTEFUL, BUT ALSO FUN! SOMETHING THAT MANY INTERIORS MISS THE MARK ON.

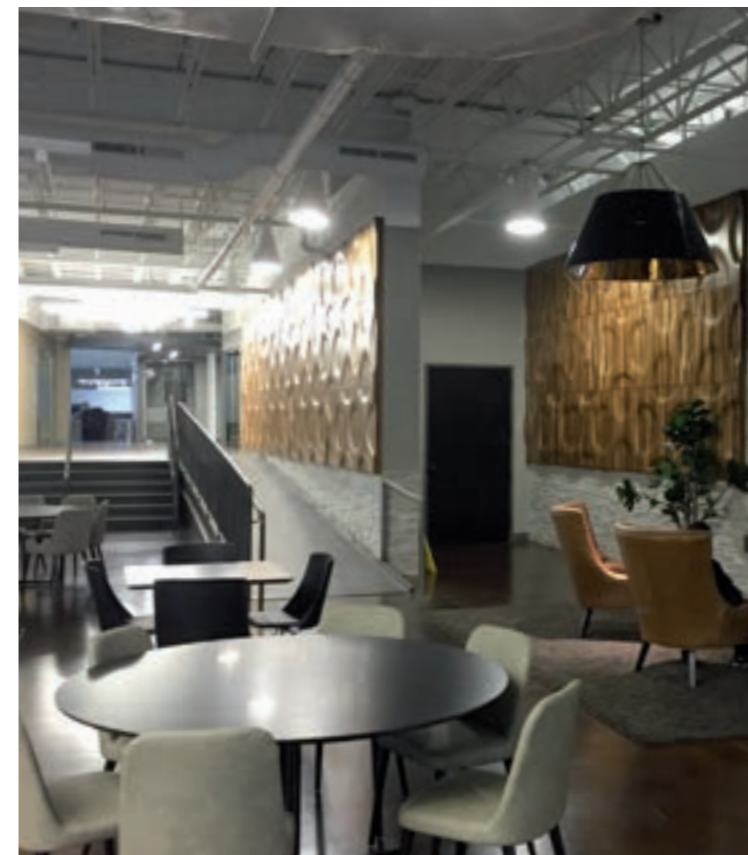


AMERICAN ADDICTION CENTERS HQ



TENNESSEE-US

THIS LOBBY AREA, WHILE WELL-DEvised IN ITS LAYOUT, FUNCTION AND ACCESSIBILITY OPTIONS, WAS LACKING ANY KIND OF COLOUR OR MAJOR AESTHETIC ELEMENT. OUR NATURAL VENEER ALASKA PANELS GAVE THIS SPACE A MUCH NEEDED SENSE OF CHARACTER, MUCH MORE FIT FOR THE RICH CULTURED STATE OF TENNESSEE. LOOMING OVER THE GREY LOBBY AREA IN-PARALLEL, THESE WALLS DEFINITELY BECAME THE CENTREPIECE OF THIS VENUE IN-TERMS OF DECORATION.



TANTRA BISTRO



FRIENDLY PERSONAL
atmosphere

PRISTINA-KOSOVO

LOCATED IN ONE OF PRISTINA'S LARGEST MALLS, ALBI, THIS WONDERFUL LITTLE BISTRO AWAITS ITS GUESTS WITH A WIDE VARIETY OF FINE CUISINE, BAKERY AND COCKTAILS. HAVING A KEEN UNDERSTANDING FOR DRINKS, AND THEIR CLIENTELE, TANTRA BISTRO PROVIDES A FRIENDLY AND PERSONAL ATMOSPHERE, WHICH IS AIDED BY OUR **BURAN** PANELS WITH THEIR PILLOW-LIKE CONVEX DESIGN AND WARM AMERICAN WALNUT COLOURATION. IF YOU'RE EVER IN PRISTINA, DON'T FORGET TO TAKE A BREATHER IN THIS QUIET LITTLE LOUNGE. YOU WON'T REGRET IT!





EXCITEMENT
and tranquility

GROUPAMA VIP SKYBOX

BUDAPEST-HUNGARY

ONE OF EUROPE'S MOST MODERN MULTI-FUNCTIONAL VENUE, HOUSING CULTURAL, BUSINESS AND SPORTS EVENTS OF THE HIGHEST CALIBER. THE VIP SKYBOX GRANTS THE PERFECT BLEND OF EXCITEMENT AND TRANQUILITY THROUGH THE ROARING CROWDS AND THE COMFORT AND CALMNESS OF THIS PRIVATE LOUNGE. SEPARATED FROM THE REST OF THE GRANDSTAND BY A GIANT ALASKA WALL, GUESTS CAN TRULY ENJOY THE EVENT, AS IF IT WERE THEIR OWN.



ESSENTIAL INGREDIENTS

for the most special of spaces

BRIEFLY ABOUT THE DESIGNER OF MOKO

OUR COLLECTION WAS DESIGNED BY **ZSOLT KARAJZ**, THE CREATIVE MIND BEHIND MOKO INTERIOR. ZSOLT WAS BORN IN 1968 IN HUNGARY. HE STUDIED INTERIOR DESIGN AT THE MOHOLY-NAGY UNIVERSITY OF ARTS (MOME) AND GRADUATED IN 1993. SINCE THEN HE HAS CREATED NUMEROUS EXCLUSIVE SPACES FOR BANKS, LUXURY RETAIL STORES, CHAIN STORES, HOTELS, RESTAURANTS AND OTHER PRIVATE INDIVIDUALS AS WELL. WHILE DESIGNING INTERIORS WITH GREAT ZEAL, HE ALSO FERVENTLY STUDIES NEW MATERIALS AND SHAPES IN ORDER TO MAKE INDOOR SPACES THE MOST EXCITING POSSIBLE.

AFTER MORE THAN 20 YEARS OF EXPERIENCE, ZSOLT LAUNCHED HIS OWN BRAND ONTO THE INTERNATIONAL MARKET IN 2014. THE UNIQUE MOKO INTERIOR WOODEN PANELS ARE DESIGNED AND MANUFACTURED WITH SO MUCH CARE AND ARTISTRY THAT THEY ARE WORTHY, OR MORE-SO ESSENTIAL INGREDIENTS FOR EVEN THE MOST SPECIAL OF VENUES AND SPACES.

OUR MISSION

OUR MISSION IS TO BRING NATURE AND ITS INIMITABLE FORMS INTO INTERIORS TO CREATE BEAUTIFUL, EXPERIENCE IN THEIR HOME, IN A HOTEL OR OFFICE SPACE. FOR A PERFECTLY PERSONALISED INTERIOR WE SET NO LIMITS ON OUR QUEST NOR IN CUSTOM SIZES, SHAPES, VENEER TYPES OR SURFACE FINISHES.

VILLA HARRAH

LAKE TAHOE - US

THIS HISTORIC VILLA WAS BUILT IN THE 1963, SPECIFICALLY TO ENTERTAIN ITS OWNER'S, THE FAMED CASINO MAGNATE WILLIAM FIST HARRAH'S FAMED GUESTS, LIKE FRANK SINATRA, OR THE RAT PACK, WHO CAME HERE TO PARTY AND RELAX. THE HOME RECENTLY WENT-THROUGH A COMPLETE RENOVATION, WHICH BOTH PAID HOMAGE TO IT'S ORIGINS, WHILE BLENDING IT PERFECTLY WITH MODERN-DAY DESIGNS AND AESTHETICS AND ADDING AN ABUNDANCE OF ACTIVITIES, LIKE BILLIARD LOUNGE, SPORTS BAR, SALT CAVE, PLUNGE POOL AND A CINEMA ROOM.

TWO FACES OF

renowned villa



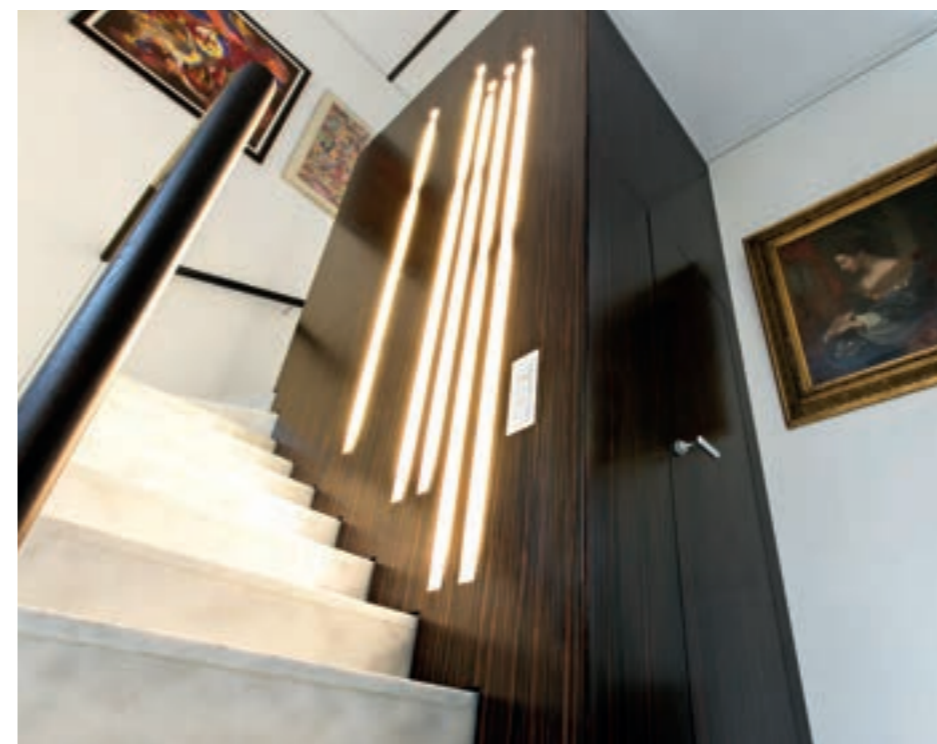




UNIQUE 'FACE'
for the living room

JEWEL-BOX APARTMENT KIEV-UKRAINE

THIS JEWEL BOX LUXURY APARTMENT WITH ITS INCREDIBLE CEILING HEIGHT AND CONTRASTING COLOURS ALREADY HAD A STRONG PRESENCE OF ITS OWN. THAT SAID, WHEN WE INSTALLED OUR EBONY **VOLGA** PANELS AT THE END OF THE CONSTRUCTION PROCESS, WE COULD FEEL THEM CLICK IMMEDIATELY WITH THE INTERIOR. NOT ONLY PROVIDING A UNIQUE 'FACE' FOR THE LIVING ROOM, BUT ALSO MATCHING PERFECTLY WITH THE OTHER WOODEN ELEMENTS. THIS PROJECT IS VERY CLOSE TO OUR HEART, AND WE ARE DEEPLY SHAKEN BY THE PAST YEARS' HORRORS IN UKRAINE. WE'D LIKE TO EXPRESS OUR SYMPATHIES TO ANYONE INVOLVED, AND OUR STANDING WITH THE BRAVE SOULS OF UKRAINE.



BOILER ARTS & CULTURE



SPLIT'S NIGHTTIME

sensation

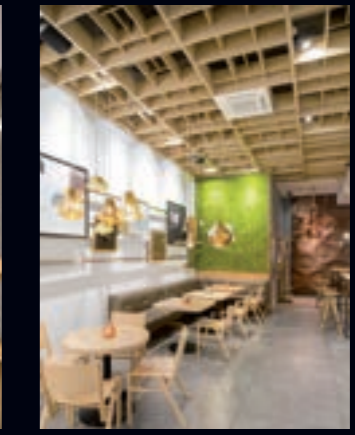
SPLIT-CROATIA

SPLIT'S NEWEST NIGHTTIME SENSATION WHERE THE DESIGN ITSELF ALREADY PROVIDES AN EXPERIENCE, WELCOMES THOSE LOOKING FOR NEW ADVENTURES. STEPPING THROUGH THE GIANT SCULPTURAL ENTRANCE, YOU ARE GREETED IMMEDIATELY BY OUR **AMAZONAS** WALL, SETTING THE MOOD FOR EVERY NEWCOMER BEFORE ENTERING THE LAVISH AND EXTRAORDINARY VENUE, WHICH SOON THEY'LL NEVER WANT TO LEAVE AGAIN.





COME, TAKE A BREAK,
enjoy intimate café



SOLINFO CAFÉ BUDAPEST-HUNGARY

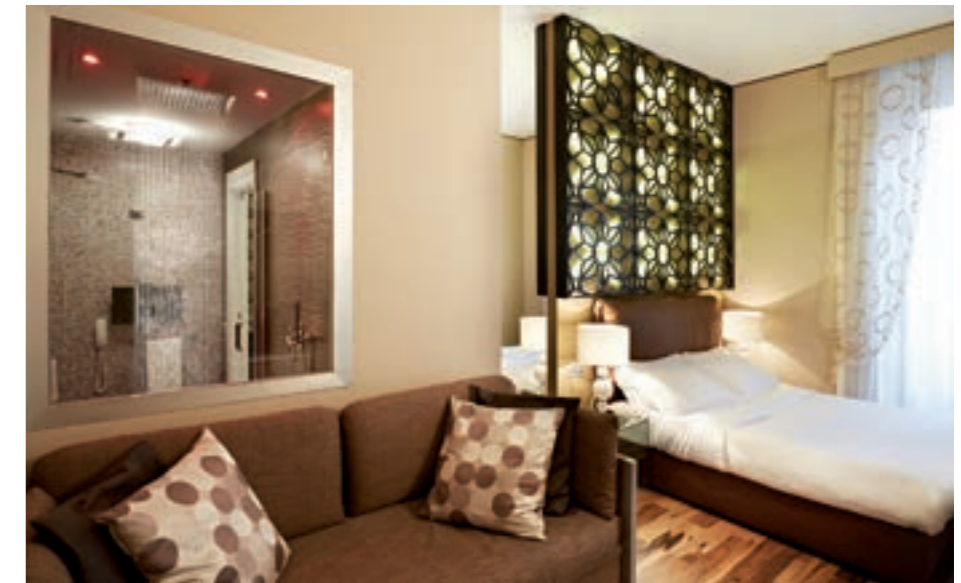
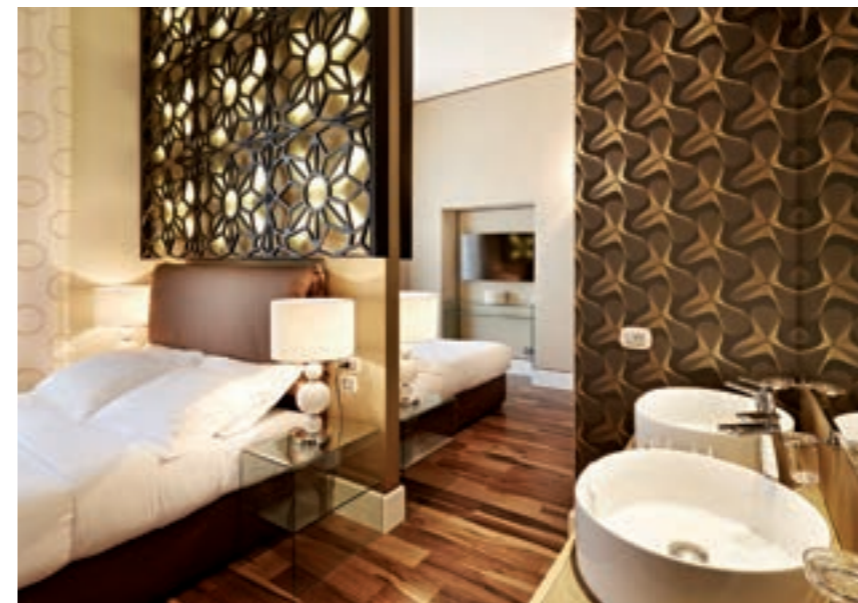
NEIGHBOURING BOTH THE BUDAPEST SYNAGOGUE, AND A TOM DIXON SHOWROOM, SOLINFO CAFÉ BLENDS THE ART WORLD WITH CULINARY TREATS, LIKE THE FAMED CAFFE GIAMAICA. ENTERING THE CAFÉ, YOU'LL FIND YOURSELF FACE-TO-FACE WITH OUR LARGEST TUNGUSKA WALL YET, WHICH IS A PERFECT DESIGN ELEMENT FOR AN ARTISTIC, BUT CALMING VENUE. COME, TAKE A BREAK, AND ENJOY THE THIS INTIMATE CAFÉ WITHIN THE VERY HEART OF BUDAPEST.



SENSUAL
RETREAT
*within Rome's
ever-beating heart*

SPAGNA ROYAL GOLDEN SUITE
ROME-ITALY

THIS 45M2 DOUBLE BEDROOM SUITE, 300 METERS FROM THE SPANISH STEPS, AND ON THE 4TH FLOOR OF A HISTORIC BUILDING WITH ITS UNIQUELY DECORATED ROOMS, IS A PERFECT GETAWAY FOR ANYONE LOOKING FOR A SECLUDED AND SENSUAL RETREAT WITHIN ROME'S EVER-BEATING HEART. OUR VOLGA WALL SERVES AS A GLAMOROUS BACKDROP FOR THE ALL-GOLD MAIN BEDROOM, WHERE GUESTS CAN ENJOY ROME IN STYLE WITH THE SUITE'S RETRACTABLE CEILING BED, XL WHIRLPOOL TUB AND CHROMOTHERAPY SHOWER.



LIGHTING DESIGN OFFICE



FUNCTION AND BEAUTY
office of the year in 2015

BUDAPEST - HUNGARY

THIS OFFICE IN THE HEART OF BUDAPEST, WHICH HAS WON 'OFFICE OF THE YEAR' IN 2015, IS A PERFECT BLEND OF FUNCTION AND BEAUTY. OPERATING AS A LIGHTING EMBASSY, WHILE ALSO FUNCTIONING AS A 900 SQUARE METER SHOWROOM EXHIBITING ARTISTIC EXCELLENCE FROM BOTH GLOBAL AND LOCAL BRANDS. THERE ARE A TOTAL OF 3 GIANT MOKO WALLS WITHIN THIS VENUE, EACH PROVIDING A DISTINCTIVE AESTHETIC TO THEIR SURROUNDINGS, BEING PERFECT EXHIBITS TO DISPLAY THE EFFECTS OF QUALITY LIGHTING.





OUR COLLABORATION WITH MOOVIA WAS ONE OF OUR FAVOURITE COOPERATIVE VENTURES. OUR LEAD DESIGNER, ZSOLT KARAJZ JUST FINISHED DESIGNING THE 'STOCKHOLM' THEATER CHAIR FOR MOOVIA, AND AFTER A SUCCESSFUL JOINT PARTICIPATION ON ISE AMSTERDAM 2015, WE DECIDED TO MAKE A COLLABORATIVE PHOTOSHOOT ABOUT ALL OUR PRODUCTS AT THE TIME, WHICH INCLUDED OUR **BURAN, KALAHARI, MATRA, MONTANA, SHAMAL** AND **TUNGUSKA** 3D WALL PANELS. THESE SHOTS WERE NOT ONLY A GREAT OPPORTUNITY TO SHOWCASE OUR INTERIOR WALL PANELS BUT ALSO SEEING HOW WELL THEY PAIR WITH OTHER SIMILARLY HIGH-END FURNITURES. ALSO, NOT ONLY WAS IT A PLEASURE TO WORK TOGETHER WITH THE STAFF AT MOOVIA, BUT IT WAS ALSO A TREAT TO WORK WITH A COMPANY OF SUCH ARTISTIC EXCELLENCE AND DESIGN PHILOSOPHY.

PROJECT LUNE
IN PROGRESS

VOLGA, THOUGH OUR MOST POPULAR MOTIF, WAS NEVER IMAGINED IN A KITCHEN PRIOR TO LUNE. GIVING ENDLESS INSPIRATION WITH ITS INFINITE SWIRLS AND TWISTS IT ELEVATES EVEN THE MOST GORGEOUS KITCHENS TO SOMETHING TRANSCENDENT. CONTRASTING THE COLD MISTY OUTDOORS WITH ITS CLEAN AND WELL LIT RIVERBANKS, IT IS BOTH THE SHELTER AND LIFEblood OF THIS VENUE OF CREATION.



SOMETHING
transcendent



CHARMINGLY INVITING
warm and comfort



MEETING VENUE PROJECT
IN PROGRESS

THIS LOBBY / MEETING VENUE IS AS MONUMENTAL AND SERIOUS AS IT CAN GET WITH ITS GIGANTIC PILLARS AND ALL-CONCRETE CEILING. AND YET, SEE HOW MUCH INTIMACY **MATRA** LENDS THIS SPACE. THE SEEMINGLY ENDLESS CHAMBER WITH ITS HUMBLING CEILING HEIGHT SUDDENLY BECOMES A SAFE HAVEN. LIKE AN ENORMOUS PALM TREE IN THE MIDDLE OF AN OASIS, THIS **MATRA** WALL BOTH DOMINATES AND COMFORTS ITS SURROUNDINGS WITH ITS LARGER-THAN-LIFE CHARACTER AND BOLDNESS.



LUXURY VILLA PROJECT
IN PROGRESS

THOUGH INSPIRED BY THE 1908 METEOR AIRBURSTS' CRATERS NEAR THE PADKAMEN-NAYA RIVER, **TUNGUSKA** IS A CHARMINGLY INVITING PRESENCE EVEN IN A FAMILY RESIDENCE. EVEN AS DISTINCTIVE AS IT IS, IT EFFORTLESSLY ESTABLISHES KINSHIP WITH ANY OTHER SPHERICAL MOTIF OCCUPYING THE SAME ROOM, LIKE LAMPS OR MIRRORS. THIS ROOM, DIVIDED INTO TWO PARTS BY ITS ESCALATION NEEDED TWO DISTINCT BUT HARMONIOUS ELEMENTS TO GOVERN EACH PART. A PERFECT ROLE FOR **TUNGUSKA**. RADIATING NOTHING BUT WARMTH AND COMFORT, IT IS AN IDEAL SOLUTION FOR WAITING ROOMS, LIVING ROOMS, OR SPACES MEANT TO INVITE.



MONUMENTAL
yet intimacy space

MOKO
i n t e r i o r
INFO@MOKOINTERIOR.COM
+36 30 434 6850
MOKOINTERIOR.COM

